

TEST after training

Before installing the EP600 , you must know following questions correctly, please write your answer about following questions.

1. Did you watch the installation video?

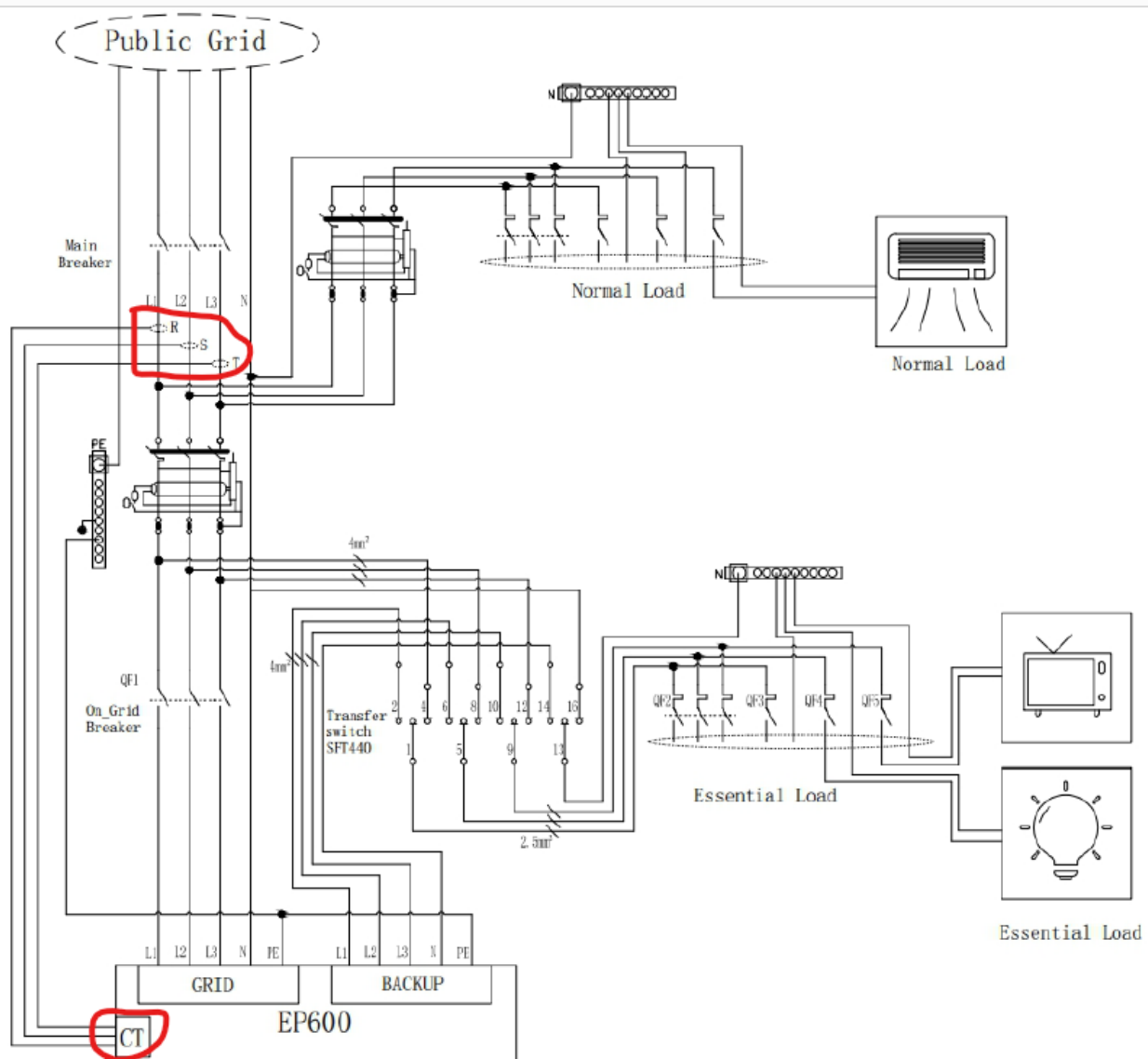
☐ A. YES ☐ B. NO

2. Did you read "EP600 Energy Storage System Training Manual V1.2"?

☐ A. YES ☐ B. NO

3. CT installed is right or wrong ?

☐ A. Right ☐ B. Wrong



4. What the purpose of transfer switch ?

- ☐ A. For building a partial residential backup system. ☐ B. Transfer switch between the public Grid and EP600

5. What is the max. power of the essential load ,when connect to the interface of BACKUP of EP600

- ☐ A. Total power is below 2000W each phase , and 6000W three phase;
☐ B. No limit

6. What is the Max. Open Circuit Voltage of Solar PV input ?

- ☐ A. 550V ☐ B. 650V

7. Before installing the EP600 energy storage system, which details you should consider ?

☐ A. Whether we need to make a backup system, if there is no power outage over the past few months ,you don't need that. If there a lot of power outage, you need to build a backup system.

☐ B. Please make sure the total rated power of the essential appliances connected to the BACKUP of EP600 such as the fridge and lights is less than 2000W each phase, in case three phase is less than 6000W.

☐ C. Other high power appliances which are more than 2000W ,they must be connected to the public grid, not connect on the BACKUP

8. What is AC rated output power to the Grid of EP600

- ☐ A. 6000W (L1/L2/L3/N) ☐ B. 2000W each phase

9. What the direction of the arrow in the CT

- ☐ A. To the public grid ☐ B. To the home appliance

10. "The neutral cable from the BACKUP interface of EP600 can be connected to the neutral cable of the public grid" is right or wrong ?

- ☐ A. Right ☐ B. Wrong

11. “the router used for EP600 applies to WiFi of IEEE 802.11 b/g/n, 2.4GHz, it can use the 5G option” is right or wrong ?

☐ A. Right ☐ B. Wrong

12. Where we need install the Meter ?

☐ A. The situation of install the solar PV ☐ B. Only used for the situation of installed three phase solar PV inverters

13. Which are the main tools and accessories we need to prepare before installing?

☐ A. Hammer drill ☐ B. Crimping pliers ☐ C. Transfer Switch ☐ D. Circuit breakers ☐ E. Electrical Cable

14. “PE and N cables cannot be connected together!” is right or wrong ?

☐ A. Right ☐ B. Wrong